

51°N 7°E

Procedures for Access to CHEMPARK from 25 March 2020

Entry to the site at the gates

Entry to the site at the gates from 25 March 2020

Pandemic measures

Access to CHEMPARK limited

Based on the currently worsening corona crisis, CHEMPARK is arranging further measures to protect employees and maintain production. Employees should prepare for restrictions at car entrances and the hubs.

To prevent the virus from spreading within the factory premises as far as possible, obligatory checks are planned.

Fever scan before entry to the factory

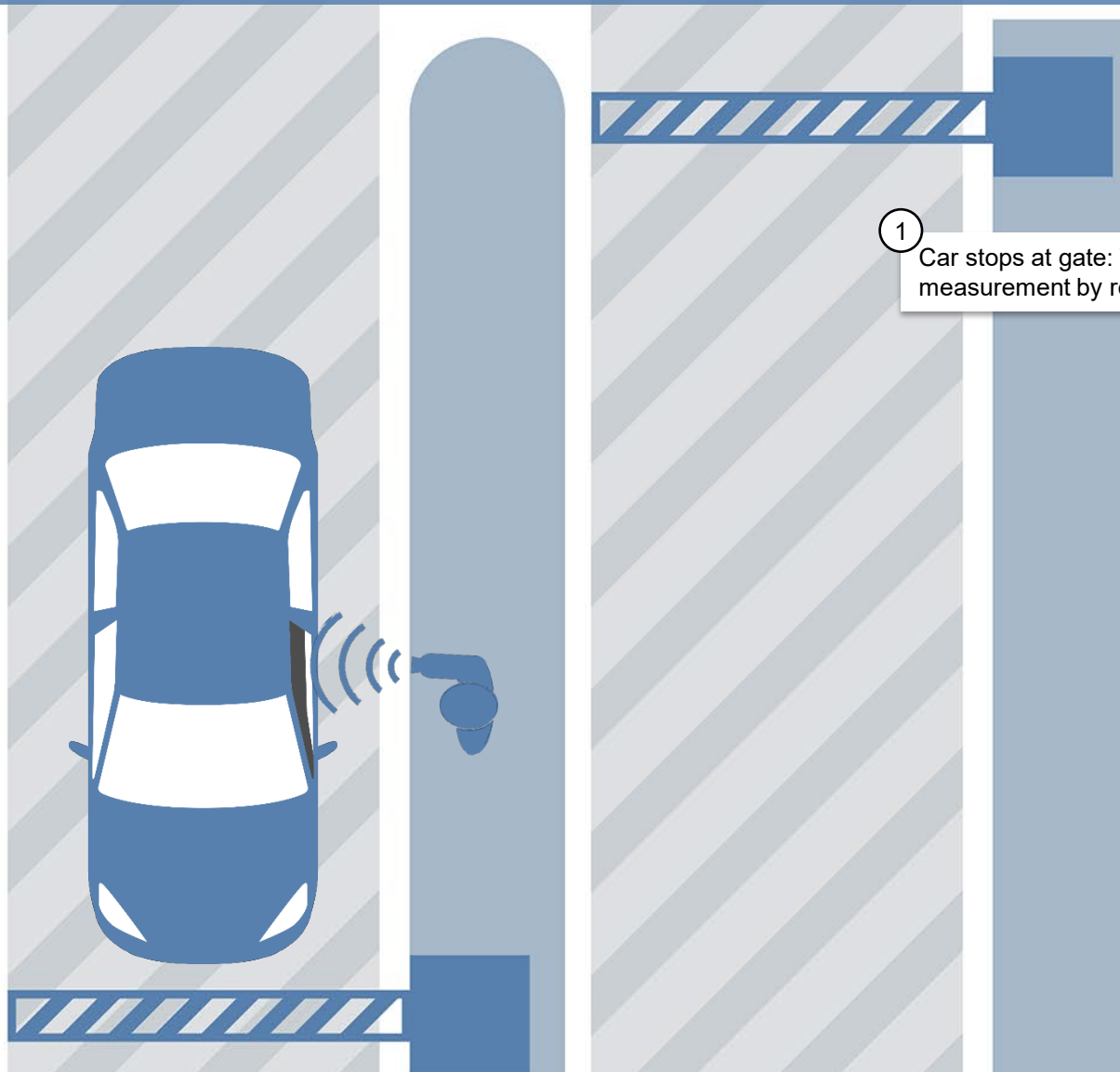
Factory security employees will be carrying out continuous fever scans at all factory entrances – the hubs, gates and truck stop as well as at the service points. Only employees without a fever will be granted access. This preventive measure has

proven effective at airports in the affected Asian countries. These fever measurements are non-contact, carried out from a distance via infrared scan.

Measures starting on 25 March 2020

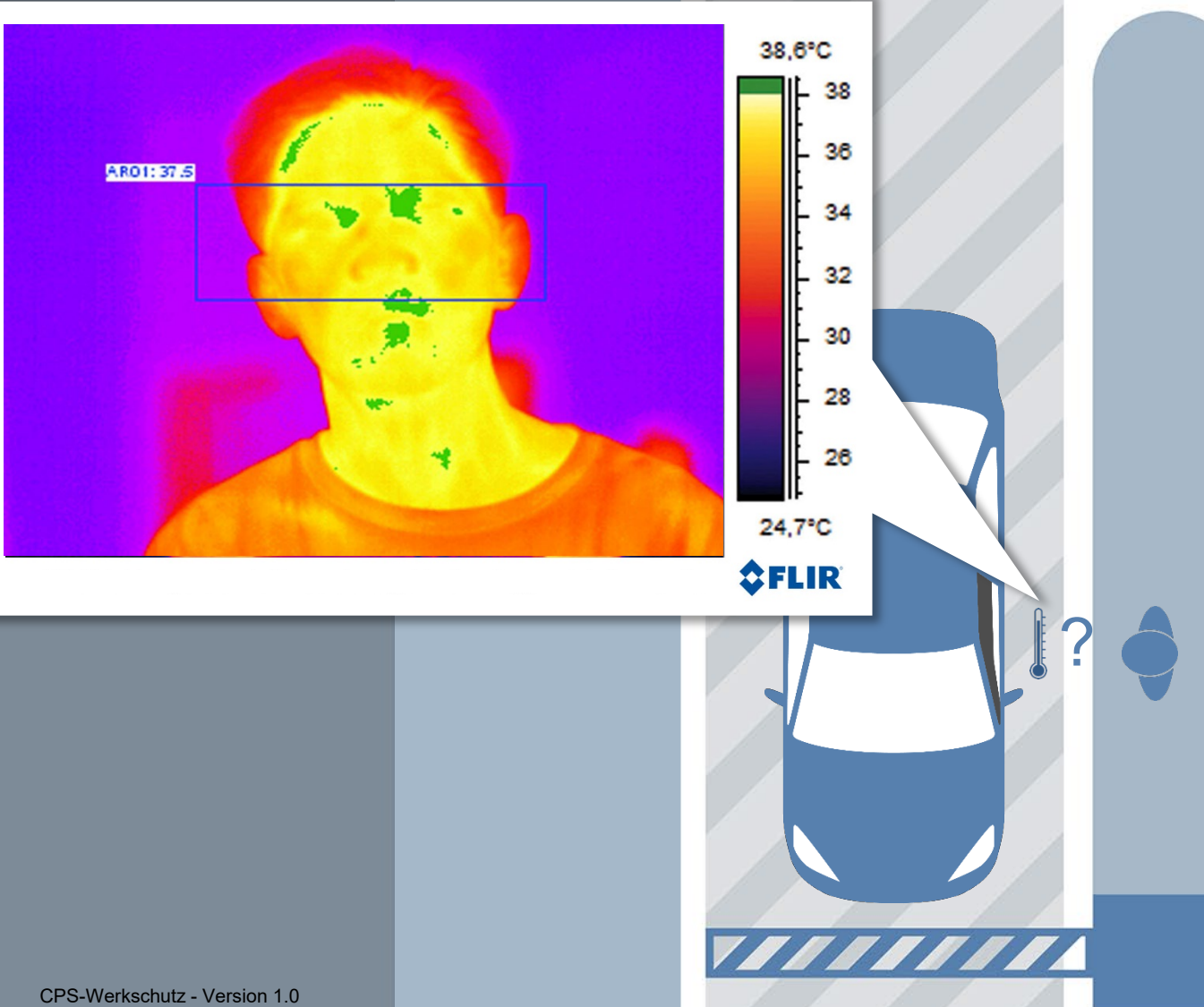
Fever measurements will result in delays entering CHEMPARK. Continuous testing is also planned at the truck stop entrance. The same applies to the badge office and the central visitor reception area. As part of these measures, the number of vehicle and pedestrian entrances will also be reduced. As the opening situation at all entrances can change at short notice, please pay attention to the current signage.

Entry to the site at the gates from 25 March 2020



1 Car stops at gate: Window down and fever measurement by remote IR.

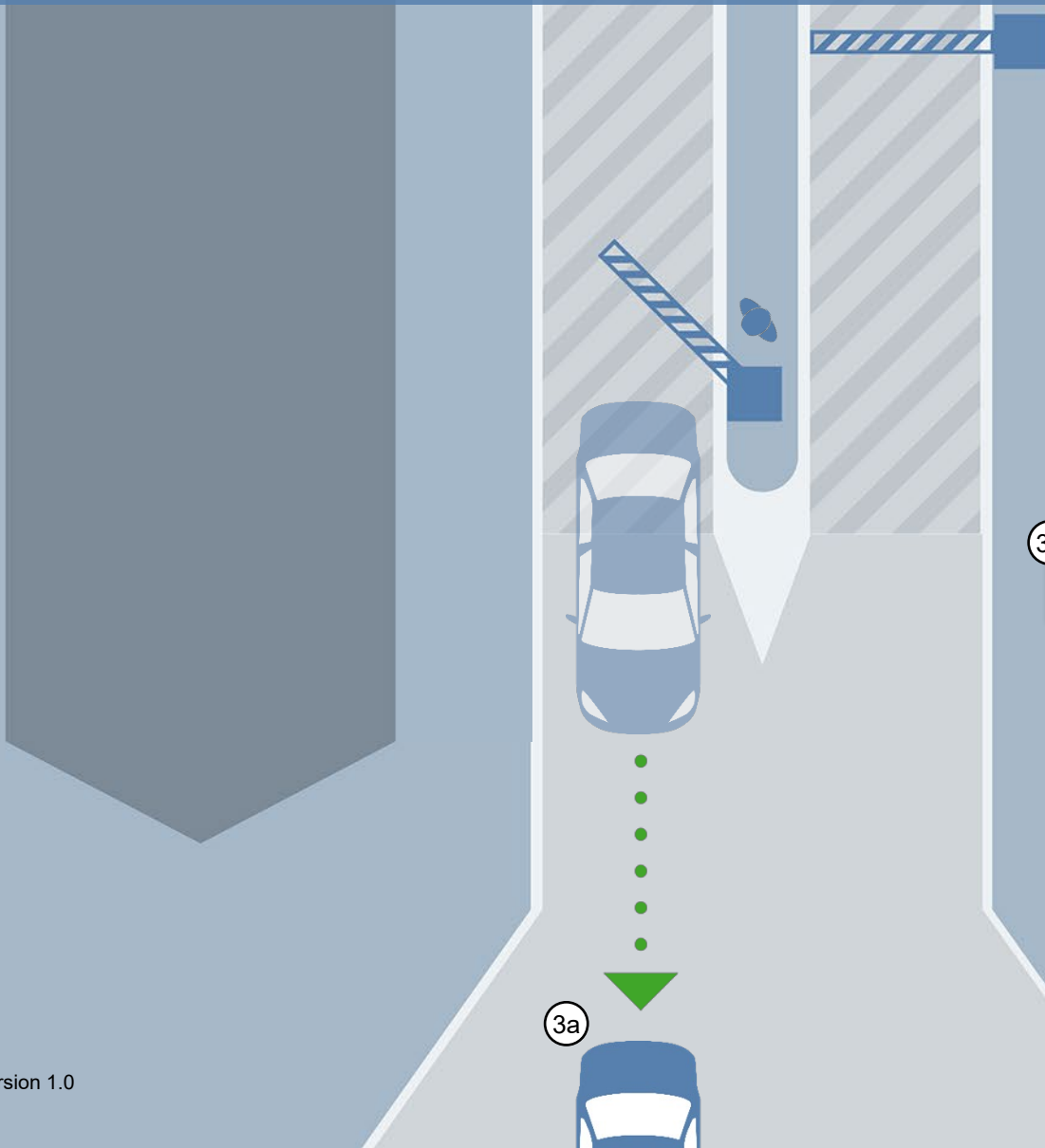
Entry to the site at the gates from 25 March 2020



1 Car stops at gate: Window down and fever measurement by remote IR.

Automated evaluation of measurement result (fever yes/no) and evaluation of overall impression.

Entry to the site at the gates from 25 March 2020

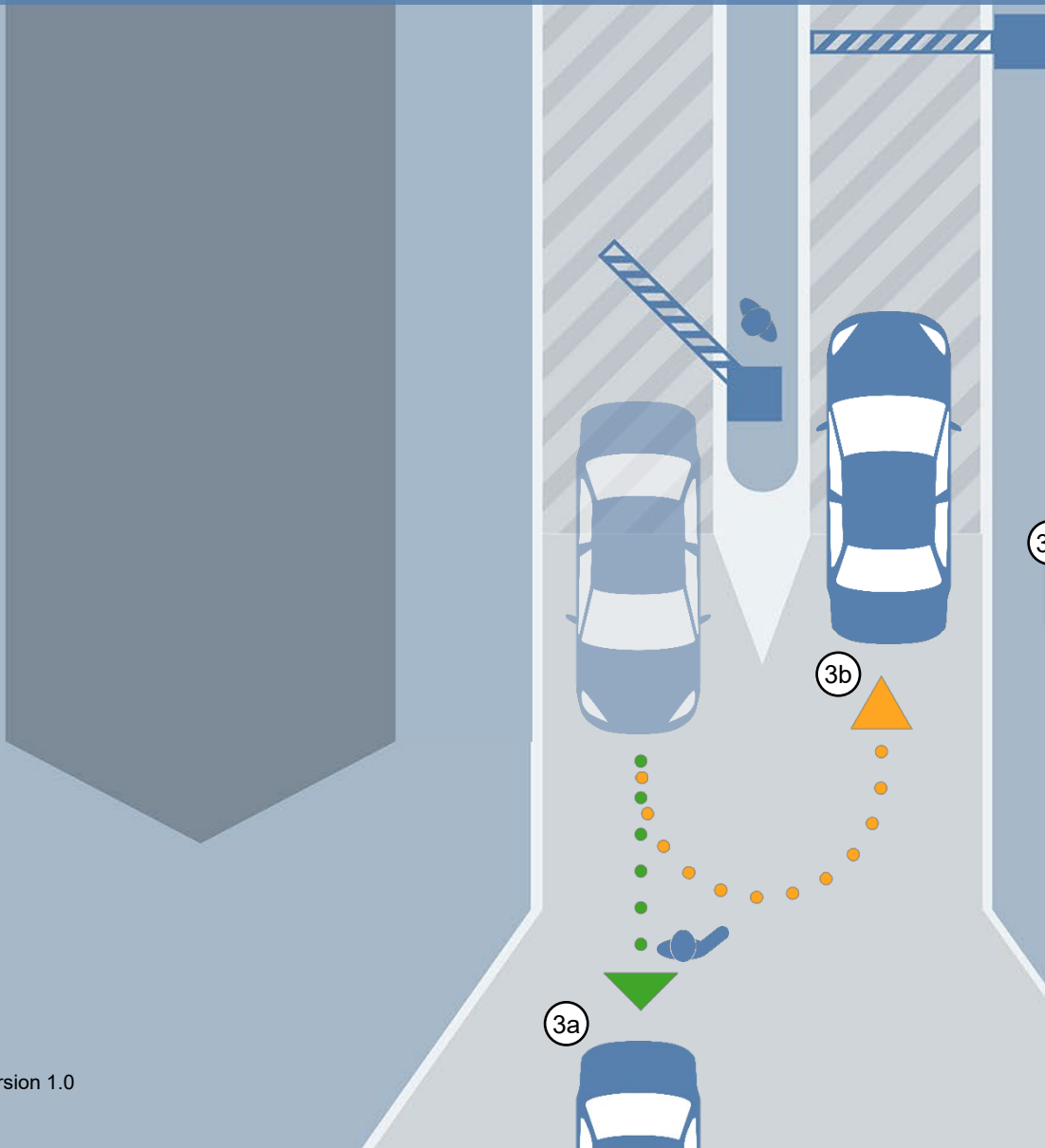


1 Car stops at gate: Window down and fever measurement by remote IR.

2 Automated evaluation of measurement result (fever yes/no) and evaluation of overall impression.

3a None of the vehicle occupants has a fever: Checking of all special passes and admission to the factory.

Entry to the site at the gates from 25 March 2020



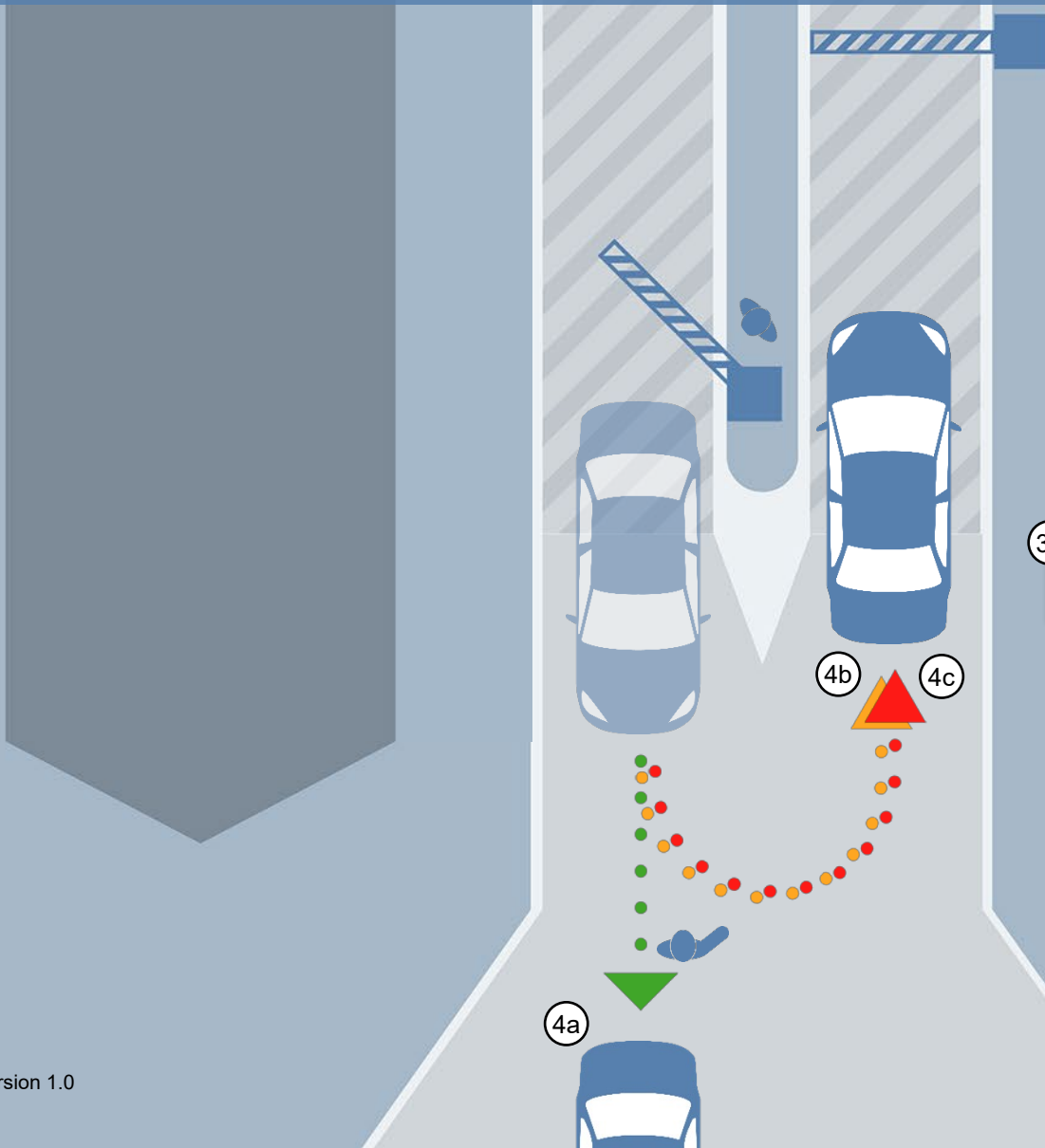
1 Car stops at gate: Window down and fever measurement by remote IR.

2 Automated evaluation of measurement result (fever yes/no) and evaluation of overall impression.

3a None of the vehicle occupants has a fever: Checking of all special passes and admission to the factory.

3b Fever after control measurement of at least one vehicle occupant:
Rejection of all occupants. All place special passes in box (documentation). Windows up. The vehicle is diverted to the exit lane.

Entry to the site at the gates from 25 March 2020



1 Car stops at gate: Window down and fever measurement by remote IR.

2 Automated evaluation of measurement result (fever yes/no) and evaluation of overall impression.

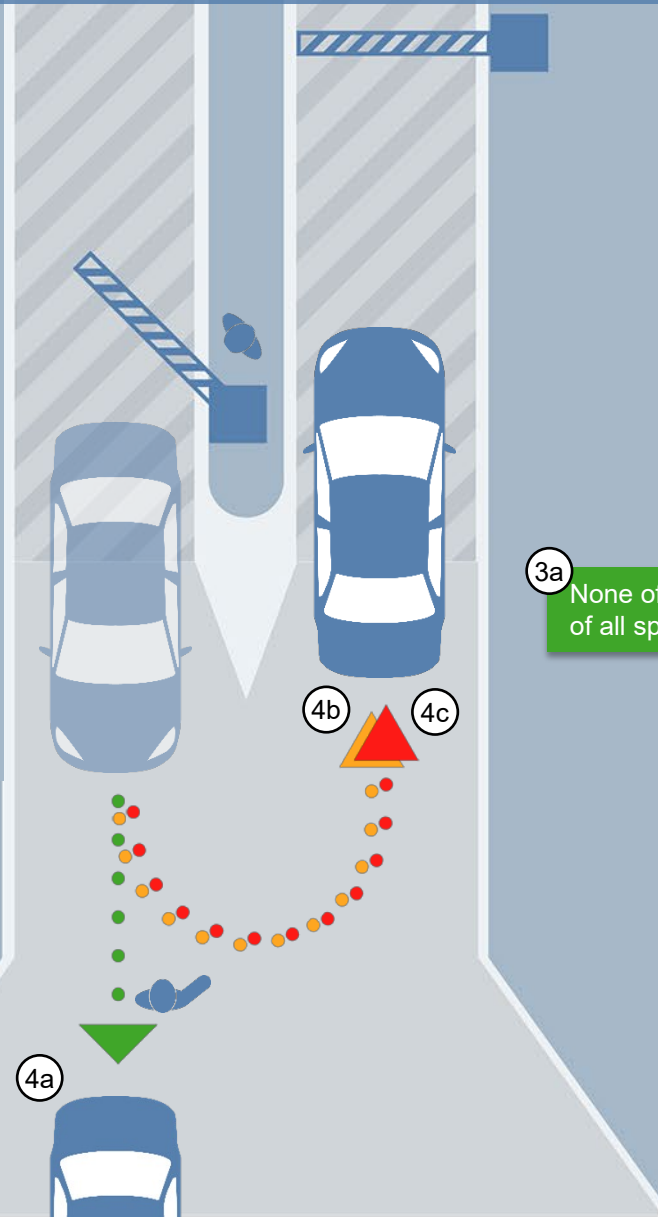
3a None of the vehicle occupants has a fever: Checking of all special passes and admission to the factory.

3b Fever after control measurement of at least one vehicle occupant: **Rejection of all occupants.** All place special passes in box (documentation). Windows up. The vehicle is diverted to the exit lane.

3c Fever after control measurement of at least one vehicle occupant and conspicuous overall impression: **Rejection of all occupants.** All place special passes in box (documentation). Ambulance is called. The car may have to be parked. **Case-by-case handling** of the situation.

Entry to the site at the gates from 25 March 2020

- Request rejected persons to **inform** their **superior immediately**
- Daily **notification of rejected persons** to HR of the CHEMPARK partners or CURRENTA



1 Car stops at gate: Window down and fever measurement by remote IR.

2 Automated evaluation of measurement result (fever yes/no) and evaluation of overall impression.

3a None of the vehicle occupants has a fever: Checking of all special passes and admission to the factory.

3b Fever after control measurement of at least one vehicle occupant:
Rejection of all occupants. All place special passes in box (documentation). Windows up. The vehicle is diverted to the exit lane.

3c Fever after control measurement of at least one vehicle occupant and conspicuous overall impression: **Rejection of all occupants.** All place special passes in box (documentation). Ambulance is called. The car may have to be parked. **Case-by-case handling** of the situation.